

VILLAGE-WIDE TRAFFIC STUDY

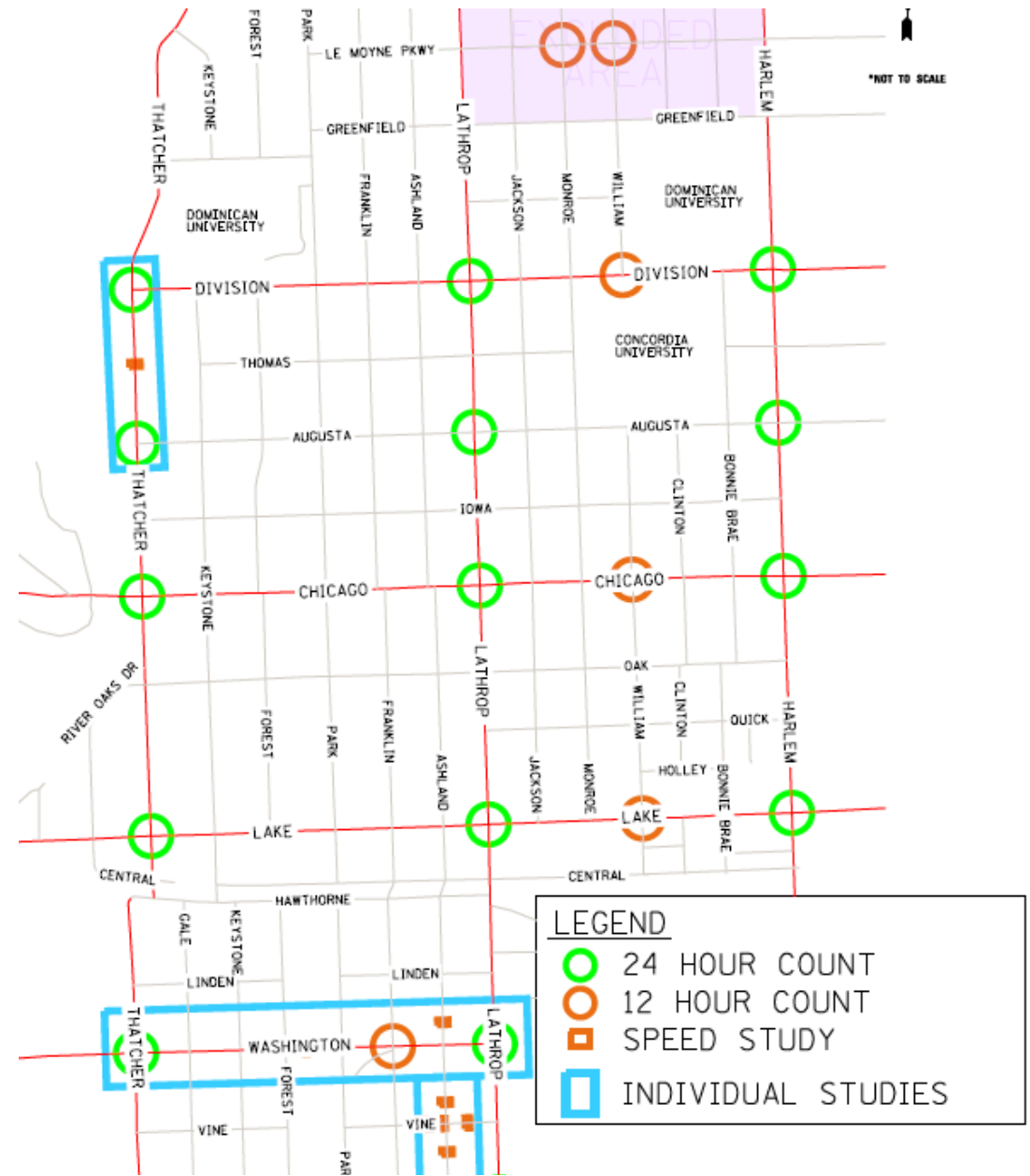
PRESENTATION BY:

THOMAS ENGINEERING GROUP

INTRODUCTION



OBJECTIVES & METHODOLOGY



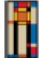
RESIDENT FEEDBACK & COMMUNITY ENGAGEMENT

River Forest - Village Wide Traffic Survey

This survey is being offered to all River Forest residents to help identify unknown speed/traffic concerns and gather resident preferences for new traffic control measures. The survey is completely anonymous, but we ask you leave an address or street name and block number to help create a heatmap of impacted blocks/residents. Data gathered through this survey will be used in an upcoming Village-wide traffic study by Thomas Engineering Group (TEG) to help identify potential locations for study.

The survey is expected to take 5-10 minutes and will include a open-response section at the end for residents to make us and the Village aware of problem areas we may have not identified as part of our initial data gathering process.

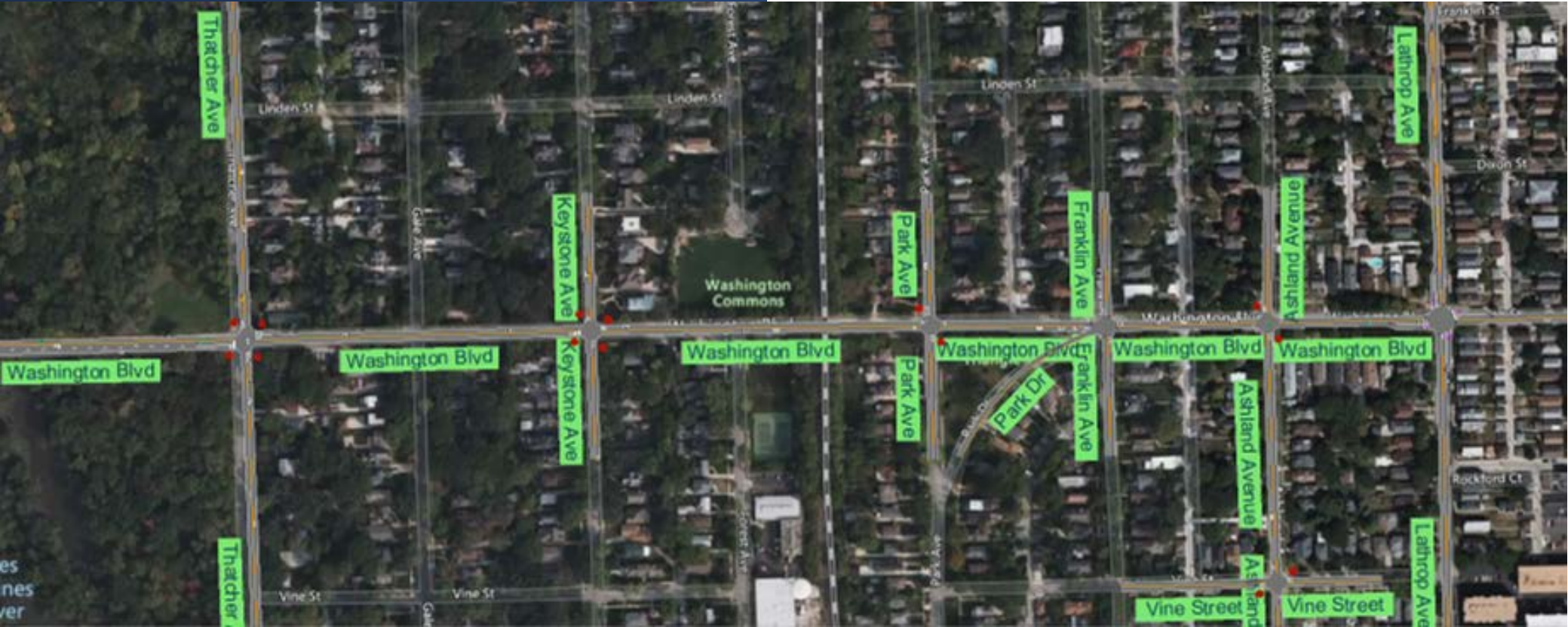
TRAFFIC CALMING TOOLBOX

Scoring Matrix		 RIVER FOREST <i>Proud Heritage • Bright Future</i>
Measure	Criteria for assigning a numerical score to traffic problems	Points
Crash History	1-3 crashes in a 5 year period = 5 points 4-10 crashes in a 5 year period = 10 points More than 10 crashes in a 5 year period = 15 points any crash involving a pedestrian/cyclist = +5 points	0-20 pts. Score:
	85th percentile speed is not over the speed limit = 0 points 85th percentile speed is 2 mph over the speed limit = 3 points 85th percentile speed is 4 mph over the speed limit = 6 points 85th percentile speed is 6 mph over the speed limit = 9 points 85th percentile speed is 8 mph over the speed limit = 12 points 85th percentile speed is 10 mph over the speed limit = 15 points Outlier Speed 20+ mph above posted speed limit = +5 points	0-20 pts. Score:
Vehicle Volume	ADT < 750 = 0 points ADT = 751 - 1,350 = 5 points ADT = 1,351 - 1,950 = 10 points ADT = 1,951 - 2,550 = 15 points ADT > 2,550 = 20 points	0-20 pts. Score:
	Any school, park, library, church, CTA station more than 2 blocks (1,320 ft.) away = 0 points Any school, park, library, church, CTA station 1-2 blocks (1,320 ft.) away = 5 points Any school, park, library, church, CTA station 1 block (660 ft.) or less away = 10 points Three or more overlapping 1-block areas = +10 points Three or more overlapping 2-block areas = +5 points	0-20 pts. Score:
Bike Routes / Non-Bike Routes	Not identified as a proposed bike route = 0 points Identified as a Marked Shared Lane = 5 points Identified as a Dedicated Bike Lane = 10 points *Per Village Bicycle Plan published in 2019	0-10 pts. Score:
	No Petition = 0 points Local Petition (0-75% residents on block) = 5 points Local Petition (75%+ of residents on block) = 10 points Village Petition (0-10% of Village population) = 5 points Village Petition (10%+ of Village population) = 10 points	0-10 pts. Score:
Intersection 1:		Total:
Segment:		
Intersection 2:		

TRAFFIC CALMING TOOLBOX

Improvement Matrix				
Available Traffic Calming Measures	Primary Issue Addressed			Usage Notes
	Speed	Volume	Pedestrian Safety	
Level 1 - No Traffic Flow Changes (25-39 points)				
Targeted Speed Enforcement	X			
Speed Radar Trailer	X			
Speed Feedback Sign	X			
Centerline/Edgeline Markings	X			
Updated Signage (New/Larger/Refreshed)	X		X	
Speed Limit Signage	X			If not already existing
Flashing Signs	X		X	
Pavement Legend	X		X	
High Visibility Crosswalks			X	
Education/Community Outreach	X		X	
Level 2 - Some Traffic Flow Changes (40-59 points)				
Sign Turn Restrictions/Turn Movement Restrictions		X		
On-street Parking Strategies	X			
Parking Lane Markings	X			
Textured Pavement	X			
Rumble Strip	X			
Rapid Rectangular Flashing Beacon			X	Motion Activated - Less intrusive
Left-turn Improvements			X	
Level 3 - Significant Traffic Flow Changes (60-79 points)				
Curb Extensions	X		X	Intersections
Mid-Block Chokers	X		X	Segments
Center Island Narrowing/Pedestrian Refuge			X	
Stop Signage		X		If stop sign warrant is met
Traffic Circle	X	X		
Roundabout	X	X		
Realigned Intersection	X	X		
Speed Hump/Speed Cushion	X	X		Segments
Speed Table/Raised intersections	X	X		Intersections
Level 4 - Street Closures (80-100 points)				
Median & Partial Medians	X			
Median Barrier		X		Cut-through traffic
Forced Turn Island		X		Cut-through traffic
One-Way to Two-Way Street Conversion		X		
Two-Way to One-Way Street Conversion		X		

CAPACITY ANALYSIS



CRASH ANALYSIS

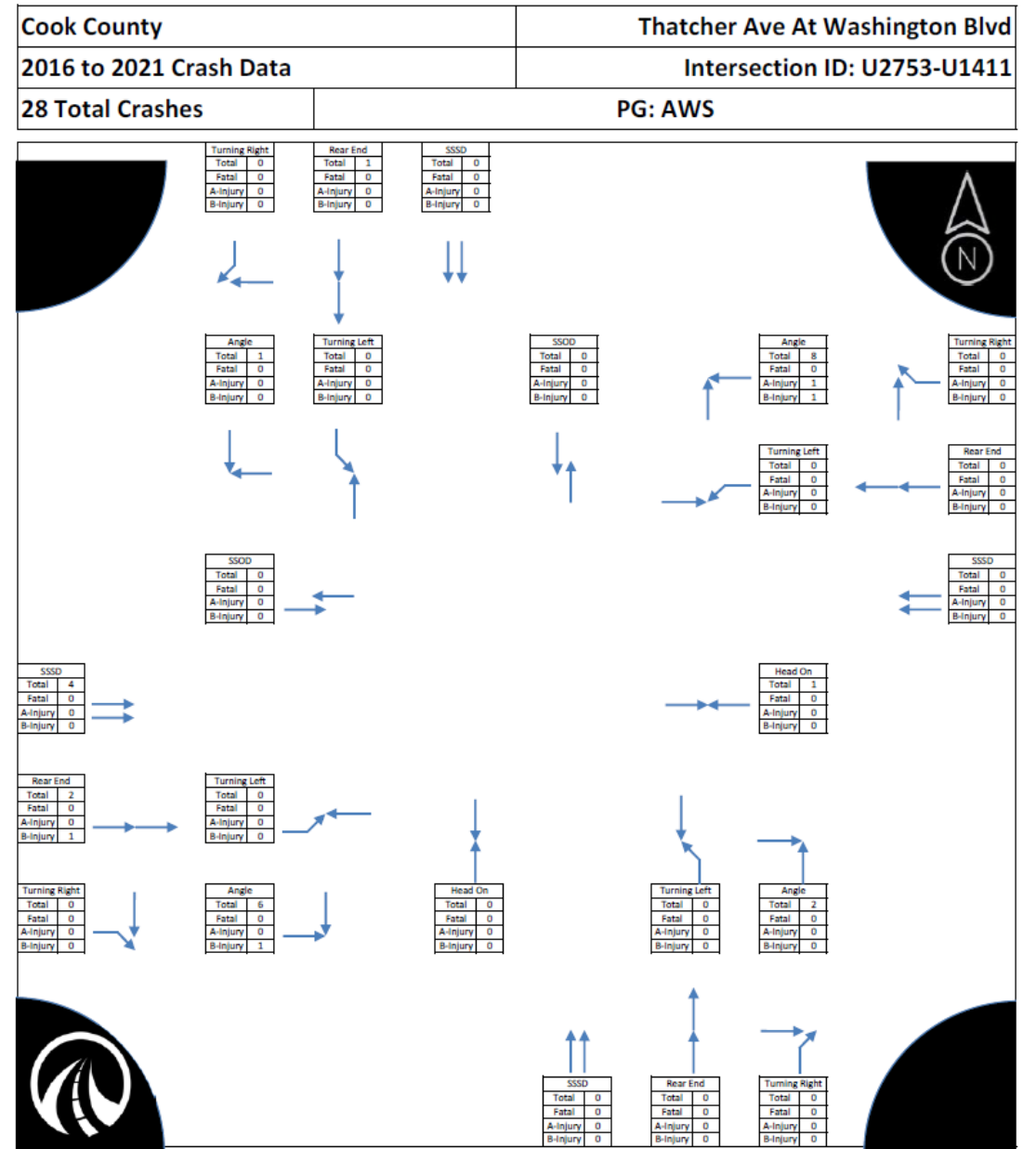
ID Name: U2753-U1411
 LOCATION INFO: Thatcher Ave At Washington Blvd
 PG, FC & ADT: AWS
 County: Cook County

Main ID: U2753-U1411
 Sub ID: ALL
 Study Period Begin Year: 2016 to 2021
 Analysis Period: 6 years

YEAR	Rear End			Angle			Sideswipe Opposite Direction			Sideswipe Same Direction			Turning Left			Turning Right			Fixed Object			Overturned			Head On			Pedestrian			Other Object			Animal			Pedalcyclist			Other Non-Collision			TOTAL	
	Crash Count	Injury Type	Injury Count	Crash Count	Injury Type	Injury Count	Crash Count	Injury Type	Injury Count	Crash Count	Injury Type	Injury Count	Crash Count	Injury Type	Injury Count	Crash Count	Injury Type	Injury Count	Crash Count	Injury Type	Injury Count	Crash Count	Injury Type	Injury Count	Crash Count	Injury Type	Injury Count	Crash Count	Injury Type	Injury Count	Crash Count	Injury Type	Injury Count	Crash Count	Injury Type	Injury Count	Crash Count	Injury Count						
2016	1			3	1-A	1-AI				1																										7	1-AI 1-BI							
2017	2	1-B 1-C	1-BI 1-CI	5						1								1																		9	1-BI 1-CI							
2018				5	1-B 1-C	3-BI 4-CI				1																									6	3-BI 4-CI								
2019				3																															3									
2020				1	1-B	1-BI																													1	1-BI								
2021										1																								1	1-CI									
TOTAL	3	1-B 1-C	1-BI 1-CI	17	1-A 2-B 1-C	1-AI 4-BI 4-CI	0			4			0					0			1			0										2	1-C 1-CI	28	1-AI 6-BI 6-CI							
%		10.7%			60.7%		0.0%			14.3%			0.0%					3.6%			0.0%																							

YEAR	INJURY TYPE					CRASH CONDITIONS						TOTAL
	K	A	B	C	PDO	Wet	Wet %	Snow/ice	Snow/ice %	Night	Night %	
2016		1	1		5	2	29%	0	0%	2	29%	7
2017			1	1	7	2	22%	1	11%	1	11%	9
2018			1	1	4	2	33%	0	0%	2	33%	6
2019					3	1	33%	1	33%	1	33%	3
2020			1		0	0	0%	0	0%	1	100%	1
2021				1	1	0	0%	0	0%	0	0%	2
TOTAL	0	1	4	3	20	7	25.0%	2	7.1%	7	25.0%	28

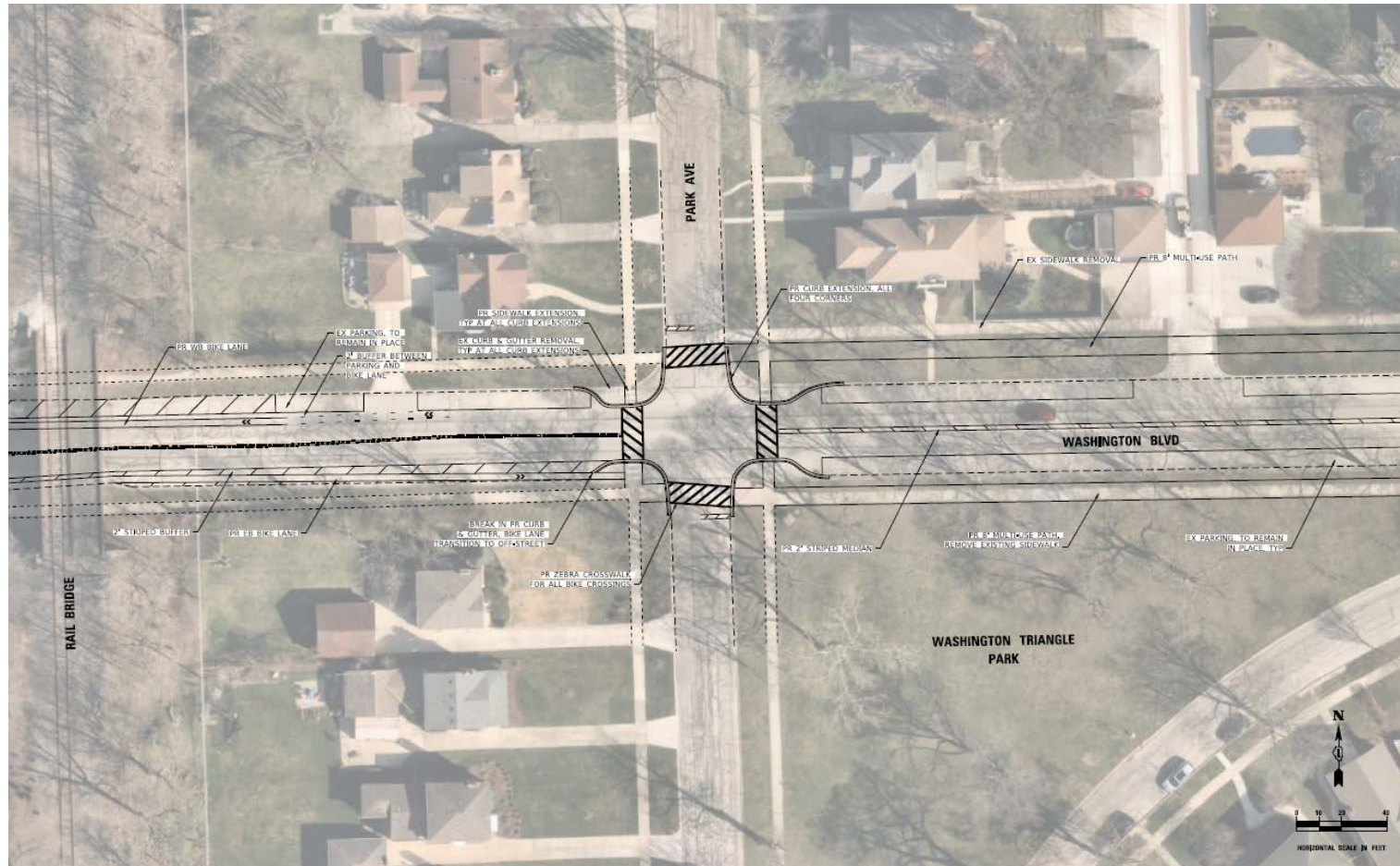
CRASH ANALYSIS



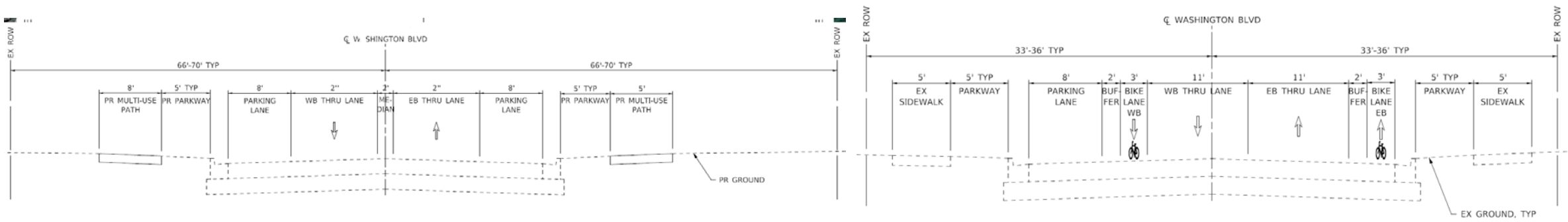
TWO-BLOCK SPAN ANALYSIS



WASHINGTON BLVD CORRIDOR STUDY



WASHINGTON BLVD CORRIDOR STUDY



EASTERN ALTERNATIVE 1

PARK AVE - LATHROP AVE
(FACING EAST)

WESTERN ALTERNATIVE 1

THATCHER AVE - PARK AVE
(FACING EAST)

THATCHER AVE SPEED STUDY



CONCLUSION

